



BOLUDA
TOWAGE

**STRONG
AMBITIONS
PULLED
TOGETHER**

www.boluda.eu



TENDER & TRANSFER RATES FOR THE PORT OF ROTTERDAM

VALID FROM 1ST JUNE 2023

BOLUDA TOWAGE ROTTERDAM B.V.



BOLUDA TENDER & TRANSFER SERVICES

Boluda Tender & Transfer Services Rotterdam has been established in 2023, to offer customers an additional maritime solution for the transfer of marine supplies, stores, parts, and persons, from our base in the Port of Rotterdam to anchorage areas on the Dutch & Flemish North Sea or vice versa.

The Dutch and Flemish North Sea hold no secret to our highly-skilled and experienced crew. Thanks to their experience in offshore towage and deep sea towage, our crew is able to sail to any anchorage.

Boluda Tender & Transfer Services is part of Boluda Towage, a family-owned company and a global leader in maritime service, providing tailored towage services to our valued customers in main ports across the globe, on the continents of Europe, Asia, Africa, and Latin America, and operates a solid, diverse, and extensive fleet with dedicated and highly-skilled employees.

Read more on boluda.eu

Mission

To respond and attend to societal needs regarding marine transport and port logistics in an effective, responsible, and professional way, always showing due respect for people, the environment, and the legal framework. We offer the maximum quality of service with the efficiency, safety, and responsibility expected of a leader in global maritime services.

Vision

To be a benchmark company, chosen by our customers for the excellence of our service and to be recognized for the human quality and professionalism of our employees as well as for our contribution to the community.

Values

- Transparency and professional honesty
- Teamwork and operational efficiency
- Flexibility and innovation
- Excellence in customer care and service

Contact details

Boluda Towage Rotterdam B.V.

Havenstraat 30, 3115 HD Schiedam | P.O. Box 353, 3130 AJ Vlaardingen | The Netherlands

📞 Office: +31 10 30 73 503 | 📡 24/7 dispatch: +31 10 30 73 555

✉️ commercial.rtm@boluda.eu | www.boluda.eu



TARIFF

FOR TENDER & TRANSFERS TO SEAGOING VESSELS OR OFFSHORE PROJECTS

PER MOVE AND FOR EACH TUG EMPLOYED – PRICES IN EURO

Dutch and Flemish Anchorage areas	Tenders & Transfer
Tariffs excluding surcharges	<ul style="list-style-type: none"> 12 hours' notice for ordering services No surcharge during the weekend
Rotterdam Anchorage areas	
DW Short Term - No 1	€ 4,500
DW Long Term - No 2	€ 4,400
Anchorage 3 East (LNG)	€ 2,100
Anchorage 3 North	€ 3,300
Anchorage 3 South	€ 3,380
Anchorage 4 East	€ 1,750
Anchorage 4 West	€ 2,050
Anchorage 5	€ 1,850
Scheveningen Anchorage areas	
Houtrust buoy	€ 1,300
Scheveningen Anchorage 1	€ 1,300
Scheveningen Anchorage 2	€ 1,500
Amsterdam / IJmuiden Anchorage areas	
Anchorage 6	€ 3,000
Anchorage 7	€ 2,800
Anchorage 8	€ 3,250
Scheldt (Flushing / Antwerp) Anchorage areas	
Schouwenbank	€ 2,800
Wandelaar	€ 6,100
Westhinder	€ 7,400

ADDITIONAL SERVICES

Anchor recovery	Anchor recovery and return to the sea: tariff on request
Anchor repair	Anchor and chain repair: tariff on request
Loading/unloading	Delivery of stores, spares, provisions, and person(s) on/from board: € 595 per hour
Standard arrival and departure address	Scheurhaven, Harbour number 5393, Rotterdam. Movements to/from other locations than the home basis at the Scheurhaven: € 595 per hour

SURCHARGES

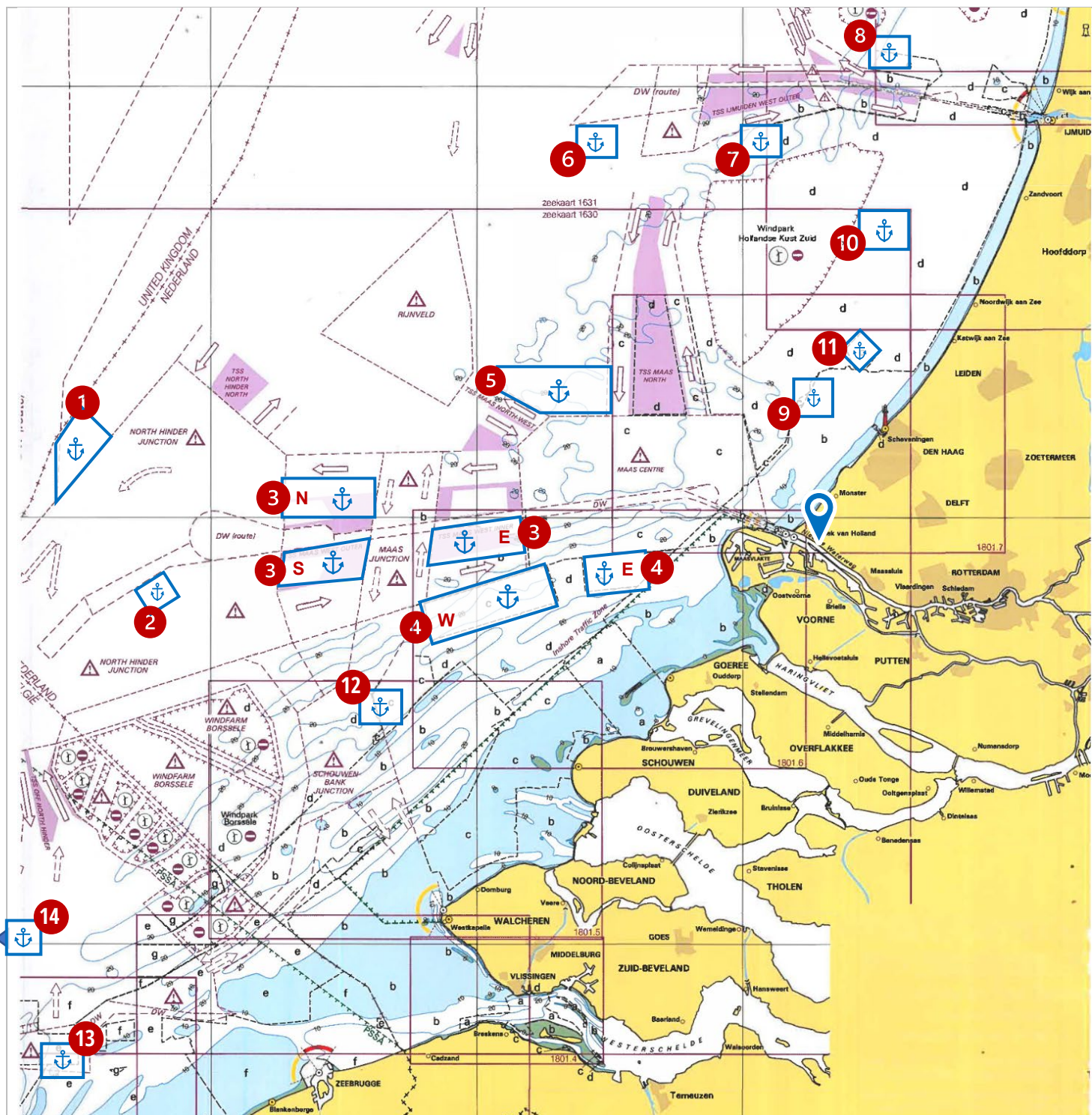
Fuel surcharge	A fuel surcharge will be applicable if bunker prices are above USD 149,- per ton
Waiting time	The first quarter is free of charge, after which the 1 st hour will be charged in full followed by 15 mins. Increments, € 595 per hour.
Cancellation	If services are cancelled or postponed without notice being given at least 3 hours before the services are due to commence and/or tug(s) is (are) dismissed without being used: 50% of the tariff will be charged.
Overtime	No overtime will be charged during night hours, weekends, and holidays.
Visibility	In case of a visibility of less than 500 meters (according to the data of the Government Pilot- & Radar Service) an additional charge of 50% for assistance during fog will be charged on all rates (waiting excluded).

TERMS & CONDITIONS

Notes	<p>Transport is (and all services provided are) exclusively governed by Dutch Law. The courts of Rotterdam, The Netherlands shall have exclusive jurisdiction.</p> <p>This service will be provided as per the terms and conditions of the BIMCO Supply time 2017, of which a copy can be provided upon request</p>
--------------	---------------------------------------------------------------------------------------------------------------------------------------------------------------------------------------------------------------------------------------------------------------------------------------------------------------------



ANCHORAGE AREAS DUTCH & FLEMISH NORTH SEA



LEGEND

Anchorage areas

Home base: Scheurhaven, Rotterdam, the Netherlands

Rotterdam

- 1** DW Long Term – No 1
- 2** DW Short Term - No 2
- 3 E** Anchorage 3 East (LNG)
- 3 S** Anchorage 3 South
- 3 N** Anchorage 3 North
- 4 W** Anchorage 4 West
- 4 E** Anchorage 4 East
- 5** Anchorage 5

Amsterdam / IJmuiden

- 6** Anchorage 6
- 7** Anchorage 7
- 8** Anchorage 8

Scheveningen

- 9** Houtrust buoy
- 10** Scheveningen Anchorage 1
- 11** Scheveningen Anchorage 2

Scheldt (Flushing/Antwerp)

- 12** Schouwenbank
- 13** Wandelaar
- 14** Westhinder




Tender & Transfer Rates for the Port of Rotterdam

Valid from 1st June 2023

Boluda Towage Rotterdam B.V.

 Havenstraat 30, 3115 HD Schiedam
P.O. Box 353, 3130 AJ Vlaardingen
The Netherlands

 office: +31 10 30 73 503
24/7 dispatch: +31 10 30 73 555

 commercial.rtm@boluda.eu

 boluda.eu